



April

2025

Sunday Celebration Service at 11:00 am

900 Madeline Lane, Lawrence, KS 66049

(785) 841-1447

www.unityoflawrence.org

Moment of Inspiration
(785) 843-8832

Silent Unity Prayer Line
(800) 669-7729

April Talks

April 6th: Cindy Smarsh "The World You Live In"



How would you describe the world you live in right now? How do you feel about the world you live in? With a deep look at Unity teachings, we will explore the world we are living in and how to transform our experience in it.

Special Music: John Keck

April 13th: Rev. Edna Mosher Palm Sunday



Political and religious power struggles, betrayal, destruction, and murder... whether it's modern-day headlines or Passover Week in first century AD Jerusalem, we have the strength, resources, and freedom to choose how we respond.

Special Music: Tim Behrens

April 20th: Jay Pryor Easter Sunday



On this Easter Sunday, Jay Pryor invites us to reflect on the powerful symbolism of resurrection as a journey to discovering the divine light within each of us. Through thoughtful storytelling and spiritual insights, Jay will explore how moments of darkness, akin to the tomb, often serve as sacred opportunities for transformation. By embracing the challenges and releasing what no longer serves us, we create space for the full expression of God to shine through, illuminating our lives and the world around us.

Join us for an inspiring message of hope, renewal, and spiritual awakening.

Special Music: UOL Choir

April Talks

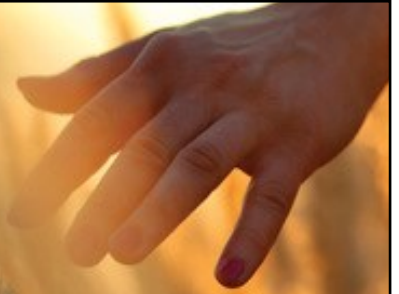
April 27th: Kelley Hunt “Packing Light”



It can be easy to “overpack” our thoughts with things we don’t need that simply weigh us down and eventually become a burden. What are we hauling around that no longer serve us on our journey? How can we lighten our load, even just a bit, to make traveling through this life lighter, leaving room for the things that will serve us and our world in a better way?

Special Music: Kelley Hunt

I have plenty
to spare
and plenty
to share.



Metaphysical Explorations at Unity

The term Metaphysical has many meanings. Essentially, it refers to that which is hidden and beyond ordinary perceptions. Terms such as the great mystery, mystical union, and esoteric knowledge all relate to metaphysics. Questions such as " What is God? How was the universe created? Who and what am I? Is there an afterlife?" and so forth are metaphysical in nature. The format will include the sharing of information and open discussion with an emphasis on interaction.

Metaphysical Explorations at Unity will meet once a month on the second Sunday right after the potluck at 12:45 to 1:45 pm in the sanctuary.

Led by Phil Roger who has explored both Eastern and Western metaphysics for over 50 years and still maintains a beginner's mind.

(Love offerings appreciated)

Special Events & Workshops in (bold type)

Sundays

Vortex Group
(Classroom Downstairs)
9:00 am

Second Sunday Potluck
April 13th at noon
(Fellowship Hall)

Evolutions:
Sacred Sound Lab
April 27th at 1:30
(Sanctuary)

Monday

Compassionate Friends
Grief Group
April 14th at 7:00 pm
(Fellowship Hall)

Tuesdays

Weekly Open Meditation
with Phil Roger
(Sanctuary)
6:30 pm

Lunch Bunch

Gathering at local restaurants for fellowship after Sunday's service

April 6th: **Big Mill** (900 Mississippi St.)

April 13th: **Second Sunday Potluck** (Downstairs in Fellowship Hall)

April 20th: **Jade Garden** (1410 Kasold Dr.)

April 27th: **Zen Zero** (811 Massachusetts St.)

Women's Group

(Speaker to be announced later)

Thursday, April 17th at 6:30 pm

We welcome those who identify as female and non-binary people.

Climate Consciousness Group

Saturday, April 26th at 2:00 pm
Gather to brainstorm ways our community can be more sustainable and put it in action together!



MORE INFORMATION: www.unityoflawrence.org

Wednesdays

Thursdays

Men's Group

7:00 pm

(Meets weekly in Sanctuary)

Women's Group

April 17th

(Fellowship Hall)

6:30 pm

Fridays

Deep Listening Sangha

2nd, 3rd & 4th

Fridays @ 1:30 pm

(Sanctuary)

Saturdays

Overeaters Anonymous

(Fellowship Hall)

10:00 am

Amazing Grace AA

(Fellowship Hall)

12:00 pm

Climate

Consciousness

Group

April 26th

(Sanctuary)

2:00 pm



Lawrence
HUMANE

April Community Outreach

Most Needed
DONATIONS

Gently used items are accepted, including towels, bags of opened dog or cat food (as long as they are not expired).

More than 4,500 animals enter our doors every year and we are able to house about 240 animals at any given time. Needless to say, we go through a lot of treats, towels, and supplies!



ANIMALS AT
LAWRENCE HUMANE
SOFT DOG TREATS
CHEDDAR CHEESE
PEANUT BUTTER
TOWELS
BLANKETS
KONGS

Please do not donate sheets, pillowcases, human clothing, newspaper or bleach. Thank you.

Celebration Service Order

11:00 am

Welcome

Opening Prayer & Song

Intentions

Special Music

Today's Message

Special Music

Meditation

Special Music

A Time of Thanks

Blessing Song

Gratitude Prayer

Opportunities

Peace Song

Prayer of Protection



To enroll in the Community Rewards program, simply visit:

**dillons.com/account/
enrollCommunityRewardsNow**

(search by name or
by NPO: **UV401**)

Tithing and Donations

Your gifts and tithes are greatly appreciated and lovingly accepted.

Automatic recurring donations are available for your convenience.

Online gifts can be made at www.unityoflawrence.org utilizing **PayPal**; a secure way to donate online.

Mail checks to:
900 Madeline Lane
Lawrence KS 66049

Like us on **Facebook**:
[@unitychurchoflawrence](https://www.facebook.com/unitychurchoflawrence)

Follow us on **Instagram**:
[@unityoflawrence](https://www.instagram.com/unityoflawrence)

Our **YouTube Channel**:
Unity Church of Lawrence

Our **Website**:
www.unityoflawrence.org

Financial Information

Contact the office if you would like a copy of our financial report or check the Board News bulletin board for our weekly report.

**Please contact Polly McCall with any questions:
finance@unityoflawrence.org**

Unity Daily Word

April Affirmations

Inner Peace: *I allow peace to permeate my being.*

Wisdom: *I allow wisdom to reign in my mind.*

Life: *I allow life to flow in my body.*

Prosperity: *I allow abundance to be my experience.*

Order: *I allow order in my thoughts.*

Unity of Lawrence Core Values

Joy: With playful expression, we celebrate Life.

Authenticity: We act with honesty, openness, and integrity.

Transformation: We actively evolve into our highest and best expression of Being.

Spirit-Guided: We turn within for wisdom and understanding.

Love: We recognize and embrace the Divinity in All.

Team Contacts

Board President

Michelle Kirk
mkscot.mk@gmail.com

Board Vice-President

Cindy Smarsh
cindywhitmer@gmail.com

Finance Director

Polly McCall
finance@unityoflawrence.org

Music Director

Holly Taylor
hollytaylor432@gmail.com

Office Administrator

Cathy Moreland
office: info@unityoflawrence.org
personal: catmore62@gmail.com

Care Team Lead

TBD

Chaplain Lead

Diane Silver
dsswriter94@gmail.com

Education Liaison

Denise Parker
dkparker50@gmail.com

Greeter Liaison

Michelle Kirk
mkscot.mk@gmail.com

Kitchen Goddess

Francesca Vance
francesca.vance2019
@outlook.com

Maintenance & Grounds

Jerod Lyles
jrdlyles@gmail.com

Marketing

Sarah Freeman
cheese911@hotmail.com

Outreach

Pat Phillips
lmnpp@aol.com

Sound/Technical Lead

Avery Wilcoxson
awilcoxson10@gmail.com

Sound Team

Robert Miller
Sarah Freeman

Weekly Groups at Unity of Lawrence

The Vortex group
Abraham discussion group
Sunday mornings at 9:00 am
Classroom downstairs



Weekly Meditation Group

An open meditation is a simple process leading to Unity Consciousness. The sessions are open to all.
Tuesdays at 6:30 pm in the sanctuary

Men's Fellowship Group
Those who identify as male and non-binary people are welcome.
Thursdays at 7:00 pm in the sanctuary



Deep Listening Sangha
2nd, 3rd & 4th Fridays @ 1:30 pm
Meeting in the sanctuary

Evolutions: Sacred Sound Lab
April 27th at 1:30 pm
(Meeting in the sanctuary)



Prayer Chaplains

Available to you for confidential, one-on-one prayer on Sunday mornings (up front) or other times by request.
Contact the office for more information.